



Working
Together
to Achieve
Success





OUR SUCCESS TO DATE

LGIM was established in the 1970's and started to manage pension fund assets on an active basis for external clients. At an early stage we recognised the role of index funds and the advantages of pooling and were appointed by our first external index fund client in 1986. In March 1987, we were the first UK company to offer pooled index funds for UK pension schemes.

We have subsequently developed a wide range of equity, gilt, corporate bond and balanced funds to meet the needs of our large UK client base and have more recently successfully extended our product offering to other European clients.

Our success is demonstrated by the growth of our funds under management and client base. This success reflects our ability to adapt to the developing needs of our clients.

Legal & General Property (LGP) is one of the top five UK commercial property fund managers and has over £8 billion in assets under management. It is a wholly owned subsidiary of LGIM and is a full service, fully integrated, property fund management business. The business extends to fund, asset and property management, property research, finance and project management. LGP is active across all sectors of the market with its size enabling it to apply sector specialist skills and access large scale transactions. Funds managed include a pooled pension fund vehicle, segregated mandates, unit linked funds for retail investors, a range of specialist funds for institutional investors and the L&G Life Fund.

Legal & General Ventures Ltd also a wholly owned subsidiary of LGIM is a well established provider of private equity in the UK. It has professionally managed funds on behalf of external investors since 1988, investing through a series of limited partnerships and Mithras Investment Trust.

ENSURING FUTURE SUCCESS

Our focussed product and marketing strategy is key to ensuring the future success of our business. The strategy is to continue to focus on our core UK pensions and UK retail markets while utilising the factors that have driven our UK success to build on our more recent presence in other European markets.

Development of business within these markets will be through our core index-tracking and fixed income products.

In summary the strategy is one of continuity while building on our existing strengths. It is illustrated in Figure 1.

WORKING AT LGIM

By working for LGIM you will be part of a relatively small, dynamic, growing business. Our culture reflects our employee values which are adopted and 'lived' at all levels of our organisation. These values sum up what we stand for as an organisation and directly influence what our clients hear, see and feel. Recruiting the right individuals is therefore critical to the continued delivery of our established award winning customer experience - superior value for money products, pragmatic tailored solutions and high quality service.


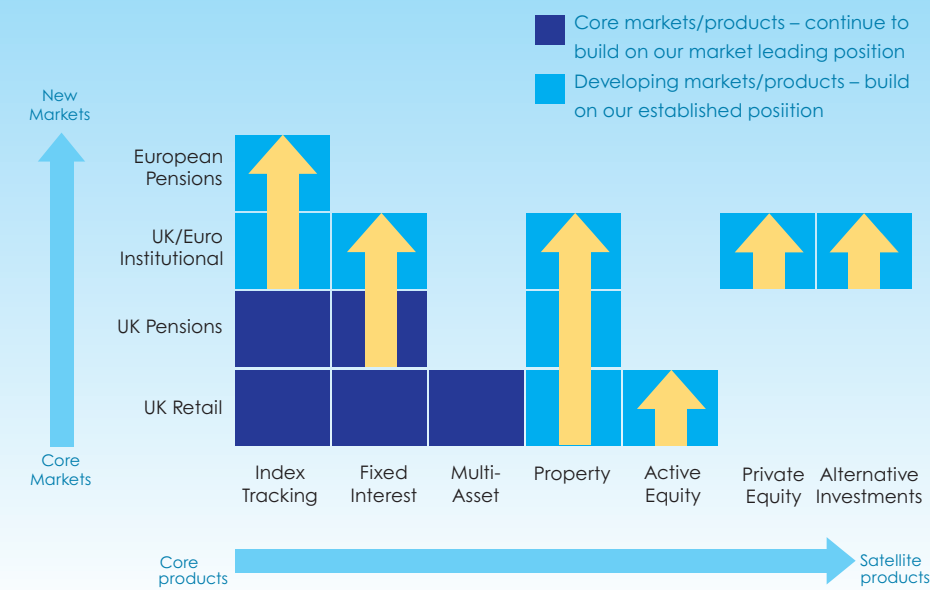


FIGURE 1 - STRATEGY



OUR EMPLOYEE VALUES

Our employee values are summarised in Figure 2.

What does this mean in practise for our employees?

- A friendly, challenging, open culture where people pull together to achieve success
- An environment where you really can make a difference and gain recognition for your contribution
- A learning environment which encourages and supports personal development

CAREER OPPORTUNITIES

LGIM’s current and future success relies on the experience, expertise and commitment of our employees. We offer a wide range of career opportunities throughout the business including Fund Management, Marketing and Client Servicing, Property Investment and Management, Private Equity, Operations and Support Services.

FUND MANAGEMENT

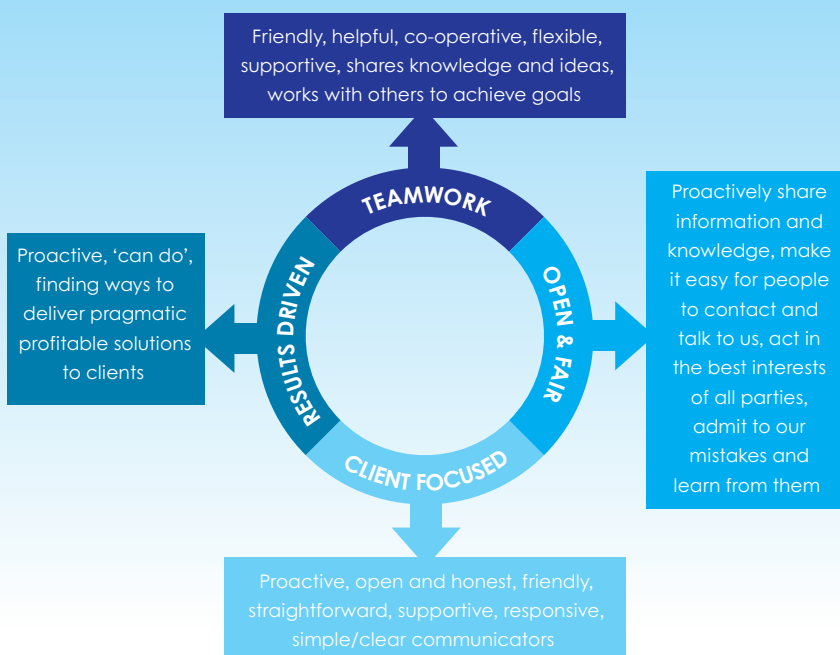
Index Equities and Fixed Income

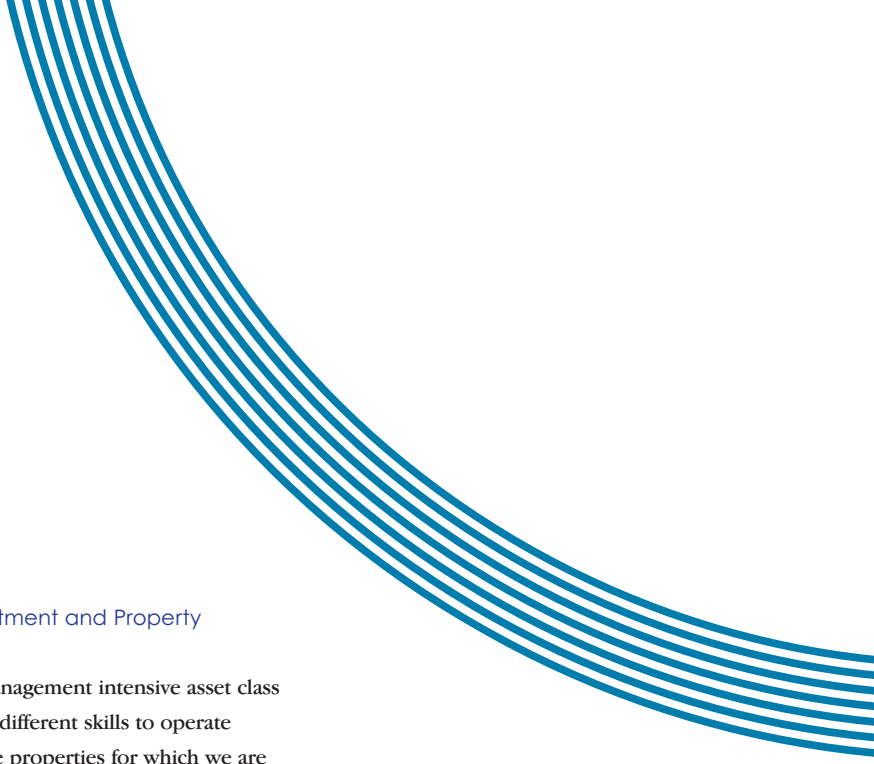
We have a team of Index Fund Managers and analysts that manage in excess of £125 billion on both a pooled and segregated basis. Our pooled index fund range is extensive covering all major equity and bond markets worldwide. Our reputation in this market is second to none and we have won many industry awards for our achievements. The team also includes specialist transition and asset allocation managers.

Active Fixed Income

Our Active Fixed Income team includes Fund Managers, Economists, Derivative specialists and analysts managing assets across the Fixed Income

FIGURE 2 - EMPLOYEE VALUES AND SUPPORTING BEHAVIOURS





spectrum - UK and Overseas Government bonds, European Corporate Bonds and High Yield bonds. This team has been extremely successful in the last few years, winning industry awards. They now manage in excess of £40 billion.

Active Equities

Our strong active equity fund management team currently manage in excess of £10 billion and they are uniquely positioned to build on our existing business. As the biggest shareholder in most UK companies due to the sheer volume of our index business we have unrivalled access to company management in the UK. What's more we are one of the largest London-based investors in overseas markets. In addition unlike other large fund management houses, our active equity teams are small, focused and dynamic, which means they provide a fast and flexible approach in changing markets.

MARKETING AND CLIENT SERVICING

Client Servicing

We have teams responsible for the business development and client servicing of UK and European occupational pension schemes and other institutional investors.

Our Corporate Pensions area has grown rapidly since we won our first external client in 1986. The team now look after over 2,700 clients making us the largest manager of UK pension scheme assets.

Marketing

The Marketing team cover all aspects of marketing, supporting and assisting with the development of both our institutional and retail businesses.

Property Investment and Property Management

Property is a management intensive asset class requiring many different skills to operate successfully. The properties for which we are responsible include office buildings, industrial and warehouse units, shops, shopping centres and retail warehouses, located across the country. To manage these LGP's team comprises people from a wide range of disciplines including surveyors, accountants, building and construction specialists and research economists.

Private Equity

Legal & General Ventures (LGV) is a well established provider of private equity in the UK mid-market. The team arranges Management Buy Outs and Management Buy Ins, typically with a minimum transaction size of £50 million in the UK. LGV's investment strategy seeks diversification by industry and has developed a focused portfolio of investments in the consumer, leisure and service sectors.

OPERATIONS AND SUPPORT SERVICES

Operations

The operations team is responsible for all fund administration, financial and management reporting, planning and risk control. The team is split between Trade Services, Security Services, Reconciliations, Life Fund Services, Fund Services, Alternative Fund Administration, PMC Services and Client Services.

Support Services

LGIM operates as an autonomous business and as such has career opportunities in IT, HR, Legal, Compliance, Company Secretarial, Finance and Risk Management.



Working Together to Achieve Success

WHO IS LEGAL & GENERAL INVESTMENT MANAGEMENT (LGIM)

LGIM is one of the leading fund management groups in the UK and the largest manager of UK pension fund assets. We offer a full range of fund management services from index and active equities through to fixed interest and cash; in addition we have property and private equity divisions. Our clients include pension funds, private investors, companies, charities, Life companies and subsidiaries within the Legal & General Group.

In total, we invest approximately £200 billion, and control over 3% of the UK stock market on behalf of our clients. This makes us the largest investor in the UK stock market. We are also one of the largest London-based investors in overseas stock markets. Our success has been driven by a clear focus on delivering pragmatic tailored investment solutions to meet the needs of our clients and their advisors.

LGIM's ultimate parent company is Legal & General Group Plc, which is one of the UK's top 100 companies, with a market capitalisation of nearly £7.9 billion as at December 2005.

Legal & General Group Plc is divided into two core business units, Investment Management and Life and Pensions. Both business units operate autonomously.



A large decorative graphic consisting of multiple parallel blue curved lines that sweep across the page from the top left towards the bottom right, framing the central text.

CONTACT DETAILS

If you have any further queries or would like any further information please contact us at:

Recruitment Team
Human Resources
Legal & General Investment Management
Bucklersbury House
3 Queen Victoria Street
London EC4N 8NH

Or email us at: recruit@lgim.co.uk

Further information about LGIM can be obtained on our website: www.lgim.com

Legal & General
Investment Management

Bucklersbury House
3 Queen Victoria Street
London, EC4N 8NH

Telephone: +44 (0)20 7489 1888

Facsimile: +44 (0)20 7528 6843